

Rec'd 13/11/25

David Wilkinson

Helios EN010140

Email [REDACTED]

Date 10/11/2025

One last plea for Common Sense, Hope and what the people of Camblesforth deserve.

Expanding from my published submission, 28 February 2025. Updated 18/03/2025 with Questions.

The Battery Energy Storage System (BESS) plus the 132Kv Sub Station

Let's be serious. This Behemoth is certainly no toy. The two massive Transformers will be 6.480 meters tall.

The Battery/Inverter containers measuring (once placed on mounts):

Length 12.2meters - Height 3.5 meters -Width 2.4 meters of which there will be
76 SEVENTY SIX !

WESTERLY WINDS

Question for Google:

Does wind carry sound further?

Answer

Yes, wind can carry sound further when it is blowing in the same direction as the sound wave, essentially acting like a "tailwind" that helps propel the sound waves over a greater distance; however, if the wind is blowing against the sound wave, it can actually cause the sound to disperse more quickly, making it harder to hear at a distance.

On Tuesday, 11th March 2025, there was a meeting at Burn Gliding Club, at 9:30am. One of the items on the agenda, is the proposed Battery Energy Storage System.

Issue Specific

Hearing 2 on socio-economic and environmental matters, landscape and visual effect, safety matters including those related to Burn Gliding Club and the proposed **Battery Energy Storage System**.

As appropriate the cumulative effect of the Proposed Development and matters relating to the Draft Development Consent Order (and the associated control documents) will be explored.

Looking at Ordnance Survey Map:

OS Explorer 290, York Selby & Tadcaster 1:25 000 scale. You will see, that Burn Gliding Club is about as far away **up wind** from the **BESS** as is possible.

From the approximate centre of Burn Airfield to the approximate centre of the **BESS**, it is **3.5Km**

From the Wheatsheaf Public House in Burn, to the approximate centre of the **BESS**, it is **4.325Km**

Furthermore, the **prevailing Westerly Winds**, will carry the noise from any contributing devices, **away from Burn**.

In the unfortunate event of a fire. **The prevailing Westerly winds** will carry any toxic smoke etc **away from Burn**.

I understand the safety concerns, of Burn Gliding Club, especially performing an emergency landing, in a field full of solar panels etc, and the location for the **Accompanied Site Inspection is ideal. BUT:**

The only place to assess the immediate DETRIMENTAL IMPACT of the BESS, is from the area of Chestercourt Cottages, the Black Dog Public house and the substantial number of dwellings, in the surrounding area. **Look at the information, complete with maps etc, I sent on the 18th February 2025.** Please note, that Chestercourt Cottages, is approx. a mere **575** meters from the **BESS**, the Black Dog Public House, **625** meters, and the village of Camblesforth is only **1425** meters away. The access gate opposite Crossley wood is a mere **142 Meters** from Chestercourt Cottages. **This surrounding field will be full of THREE METER HIGH SOLAR PANELS and their associated control gear.**

This is the problem.

The prevailing westerly winds, put the aforesaid, directly in line with the **BESS**.

Unlike Burn - we will be subject to guaranteed noise, twenty-four hours, 365 days a year, for the next forty years. This is of course, excluding the building phase.

Unlike Burn, **we will**, in the unlikely event of a fire, (**fact these batteries can, and do set on fire**) be the first to receive whatever **TOXIC** myriad of life threatening/life changing influence, it chooses to bestow upon us.

In the name of common sense, have an **Accompanied Site Inspection** from the area I have previously suggested, i.e. **from the area of Chestercourt Cottages, the Black Dog Public house and the substantial number of dwellings, in the surrounding area.**

I have asked both the Planning Inspector and Keir Mathers on a couple of occasions, but to no avail.

The BESS will be approximately **575** meters from Chestercourt Cottages, **625** meters from the Black Dog Public House, **which is surrounded by a substantial amount of Housing -** so much so, that in 2006 Yorkshire Water deemed there to be enough buildings to put in a public sewer for all.

Camblesforth Village is approximately **1425meters/1.425Km** **DIRECTLY IN THE FIRING LINE** **WIND WISE** should any problems occur.

NOISE

Guaranteed noise 24/07/365 days per year (please remember some countries armed forces, use noise as a form of torture)

Please see in the attachments: **FIG 7.19 1 & 2** plus **MAP 8 (supplied)**

FIRE RISK

Lithium-Ion batteries. Whilst it is easy for some to say, that the probability of fire is low, it is a **fact** that these fires do occur! As fire fighters have discovered in recent years, lithium-ion battery fires are prone to reigniting. That's because the lithium salts in the battery are self-oxidizing, which means that they can't be "starved out" like a traditional fire. These Batteries can give off Hydrogen Fluoride.

How hydrogen fluoride works:

- Hydrogen fluoride travels easily and quickly through the skin and into the tissues in the body. There it damages the cells and causes them, to not work properly.

- The seriousness of poisoning caused by hydrogen fluoride depends on the amount, route, and length of time of exposure, as well as the age, and pre-existing medical condition of the person exposed.
- Breathing hydrogen fluoride can damage lung tissue and cause swelling and fluid accumulation in the lungs (pulmonary edema).
- Skin contact with hydrogen fluoride may cause severe burns that develop after several hours and form skin ulcers. Also, leakage of chemicals/acid into the ground aquifer. Toxic wind-blown fumes.

My house is approximately [REDACTED] meters, together with others in close proximity from the Battery Energy Storage System and approximately [REDACTED] meters from Brigg Lane Camblesforth. The prevailing westerly winds put us directly in line with the BESS. Which will be, a TICKING TIME BOMB affecting mental health.

Questions still not answered

5.2.25 Requirement 23: Operational Noise. THIS REQUIREMENT PROVIDES THAT THE RATING LEVEL (Lar) of noise from the operation of the authorised development shall not exceed: 40 Db of noise from the operation of the authorised development shall not exceed 40 Db Lar for any fifteen minutes period between 23:00 and 07:00 and 50 Db LAeg for any one – hour period between 07:00 and 23:00, determined one meter free-field external to any window or door of any existing permanent residential premises using the definitions and methods described in Methods for rating industrial and commercial sound British Standards Institution BS4142:2014+A1:2019.

What are the **independent readings** now pre build?

With Reference to Environmental statement Figure 11.4

(The map I have supplied number 7), has a symbol Z? which I have added. Whatever it/they are. (counted 28) They have the capability of emitting 45-50 dB of noise. The Z? in question is ALMOST [REDACTED]

Due to the poorly detailed map, I could not get a Fix position to measure approx., how close it is.

On the poorly detailed Map Fig 11.4 – Noise Contour Map Daytime, (my ID Map 7). I would like some independent assurance, that *as if by some miracle*, we are in the < 30 dB zone.

3.4.17 The Field Stations, (see attachments)

2. Are these the Inverter Stations? (Same size as Battery stations. If so, GUARRANTEED

NOISE **up to 100?)**

Answer 2 _____

3. Where are the, to scale location drawings for these?

Answer 3 _____

3.4.22 Battery containers (separate from Field Stations and Inverter Stations)

12.2m in length x 2.4m Width x 3.5 in height.

4. It does not say how many?

Answer 4 _____

What we have now

High quality agricultural FOOD producing land (some with underground aquifers). Panoramic **everchanging** open fields with **views as far as the eye can see**. Lovely lanes and footpaths, which people use **to mentally** refresh themselves as well as providing **physical exercise**. To some people this may seem like little things, but in the wider picture, keeping both mental and physical health, can prevent **other unforeseen knock-on situations** e.g. More load on the **already struggling NATIONAL HEALTH SERVICE**. After all the Victorians created public parks to offer healthy recreation for all, and in particular the working classes. The Victorians saw recreation as offering **mental and physical wellbeing**, and social benefits literally a 're-creation'. They realized that parks could serve as '**The Lungs for the cities**'.

Such a diverse variety of wildlife including Deer, Badgers with next to no physical barriers to corral them, or anything else for that matter.

The variety of bird life is amazing, a list of which I have mentioned in previous submissions.

What is being proposed

Helios are proposing to take **476 hectares of High-Quality food producing land out of service**, and **IMPOSE** upon us, fields full off mind-numbing rows of, **THREE METER HIGH**,

monotoned glass solar panels. They say after 15 Years you won't be able to see them, due to the very high screening fences, they are putting up to surround them. ***They will also screen the views that I have just described earlier.***

Chestercourt road for example.

Please see the following

Environmental Statement Appendix 7.7 - Visualisations (Part1 of 2).pdf (Please look online, to see Photos of the landscape)

Please copy the link below into google to look at the following

[https://infrastructure.planninginspectorate.gov.uk/wp-content/ipc/uploads/projects/EN010140/EN010140-000386-6.3%20Environmental%20Statement%20Appendix%207.7%20-%20Visualisations%20\(Part1%20of%202\).pdf#page=14](https://infrastructure.planninginspectorate.gov.uk/wp-content/ipc/uploads/projects/EN010140/EN010140-000386-6.3%20Environmental%20Statement%20Appendix%207.7%20-%20Visualisations%20(Part1%20of%202).pdf#page=14)

Looking at the photographs, on the following VIEWPOINTS. 3A, 3B, 3C, and 3D.

Look at **EXISTING**, **YEAR 1**, and **YEAR 15**.

ON YEAR 15, you might as well be walking in a maze.

In this increasingly unstable world, of which things are changing on a daily basis. ***Who in their right minds would SQUANDER this precious land, that enables us to independently produce food for ourselves, and not be at the mercy of somebody else, and at what cost?***

I believe that most of the Solar panels are made and supplied by China. Once we become reliant on China. What do we do if they decide not to supply us with spares etc.

We can see Farmers being inundated with these Solar companies offering up to £1200/acre – index linked – for the next 40 years.

My opinion is. To risk our independence, by potentially having this being **IMPOSED** upon us, is not only **morally wrong, unethical and an irresponsible thing to do.**

BUT IS ALSO TOTALLY AGAINST OUR WISHES!

Question. What is democracy? Oxford dictionary explanation:

A political system, that allows the citizens, to participate in political decision-making, or to elect representatives to government bodies.

CUMULATIVE IMPACT

We have Drax Power Station.

There are two additional Solar Farms, which have been passed and are starting to be constructed around Camblesforth.

Camela Lane close to the northern village boundary of Camblesforth, on **113 hectares**.

Wade House Lane to the south east of Camblesforth.

Together with the Helios site, **Camblesforth will be totally surrounded and placed inside an Industrial Complex.**

Boom Power is hoping to build a Solar Farm near Howden which is just to the east of Drax. This will negate **1,200 Hectares** of food producing Land. We also have **Rusholme wind farm**, which is a 12-turbine wind farm located near Drax. **Drax Power** is going to start recovering, a lifetime deposit of Pulverised Fuel Ash (PFA). Some by rail, but the rest by Road.

Drax Power is to receive power from up North to come from Bridlington with all the upheaval that that will entail.

Drax Power is looking to put in a carbon capture pipeline to the North Sea. All of these, will put extra vehicular strain on the A1041, which is already struggling at the present time, and the A645, irrespective of the new homes that are being, and going to be built in the area.

The combination of all these schemes, that we will **miserably have to endure**, will take years to build.

Is this concentrated area, not doing more than enough, for the energy needs of our Country? Please do not suffocate us, with this industrial complex, and leave **us some** - of the quality of life that we have at the moment.

Together with this Project, the Village of Camblesforth will be totally **SURROUNDED**.

Please remember these fields provide more than just food, but also provide the lungs of our lovely village, and give us sustenance and wellbeing in many other ways.

My Philosophy is 'Leave it at least as good as you got it - if not better'.

Please leave something of worth, not only for our children, but our children's children.

Incidentally, we get the occasional Hot Air Balloon, landing in these very same fields.

To sum up

I don't want this, and I have never felt so impotent and incapable in my life.

We don't want this.

The Camblesforth Parish Council don't want this.

Councillor [REDACTED] Electoral Division: Camblesforth & Carlton division, doesn't want this.

Kier Mathers MP for Selby wrote an article recently in the Selby Times November 6th, 2025 Headlining SOLAR FARMS CONCERNS. This is regarding the Light Valley Solar project.

The Villages affected are Escrick, Monk Fryston, Hambleton, Chappel Haddlesay and South Milford. A resident spokesperson said:

"His concerns clearly show that the proposals are totally inappropriate for our area. There are a number of very valid concerns that he has raised, the sites scale, the impact on wildlife and residents, and impact on areas of flooding".

I contacted Keir as early as early as **14 August 2023** asking him do all he possibly could, to prevent this senseless loss, of abundant quality food production, **which putting it simplistically, is our primary need.** The area being talked about was the Village of CAMBLESFORTH, potentially being surrounded by The Camella Lane Solar farm. The Wade House Lane Solar Farm and The Helios Solar Farm. The local community was invited to two meetings, one at the Carlton Village Hall **26 January 2024**, the other was at the methodist Church in Camblesforth **15th August 2024.**

I was in no doubt that anyone present at the meeting did not agree with what was proposed i.e. totally surrounding the village of Camblesforth with Solar Farms.

Making objections as early as 31st August 2023. Our concerns were the same as the aforesaid Light Valley Solar project Resident.

As of the 10th November 2025. They are now building the Camella Lane Solar Farm, and the Wade House Lane Solar Farm has been granted and given the go ahead.

Regarding the last Solar Farm to completely surround Camblesforth, The Helios EN010140. On the 15/10/2025 the Secretary of State has today issued a letter inviting all interested parties to comment on the responses to the request for information on 26 September 2025. **The deadline for response is 23:59 on 14 November 2025. 23:59 on 14 November 2025.** The decision to accept/not accept is nearing.

PRIORITY

Site Meeting to RE-LOOK at, and evaluate the safety, and wrongly siting, of the BESS & Substation

Taking the **WESTERLY** prevailing winds, I think that more scrutiny/facts need to be carefully looked into with regard to the BESS, ***being so close to substantial local housing, providing 24/7/365 days a year guaranteed noise.*** Plus, the potential of fire associated with Lithium-Ion Batteries and the complications trying to put them out as well as the extremely toxic fumes. ***This large imposing/threatening complex, is a potential ticking time bomb,*** being approximately a mere **575 meters** away from a substantial number of houses, plus approx. **625 meters** from the Black Dog Pub, and a mere **1425 meters/1.425Km approx. from Camblesforth Village,** which is also in the firing line.

The Three meter Solar Panels and their control gear will be as little as 142 meters away.

NOISE 24/07/365 days per Year. (Mental Destruction).

What independent tests will be carried out to ensure our safety.

For me the strategy of these opportunist Solar companies, other than looking at a map to find an easy and cheap Grid connection site, such as Drax and Monk Fryston. Then fill as many fields as you can get away with, irrespective of the soil grade, until public outcry/opinion forces the Government to throttle these back. The question is, how many have got through the net in the meantime, and how many local communities have been adversely affected?

Thought

Once the farm workers have been finished and the machinery sold off, ask yourself, in forty years', time, how will we replace the **skills and equipment when the need comes?**

Please remember, farming is a way of life, that can involve round the clock working, plus long hours of work at very unpopular times. You can't just go down to the local Supermarket and buy them off the shelf!

I would like to finish off with the fact that it had to come from [REDACTED] that these operations are doomed to failure, before people are starting to question the lunacy. *When the ordinary man in the street, who actually knows what they are trying to get away with, has been trying to communicate this all along.*

Please take the Helios Solar Farm out of the equation, and let us keep the quality of life we deserve.

Video below, talking to people and asking what it's actually like, to live and endure being as close as we do, to an operational Solar Farm for real (not what the [REDACTED] developers tell, or don't tell you.)

Please copy and paste this link:

<https://www.youtube.com/watch?v=RMx6h7L3quU> into google, to see for real, what a couple living next to a Solar Farm have to say.

Having watched this video. Please ask yourself, what if this was forced upon me, would I want my myself, my Parents, Children, Grandchildren, to experience this life, quality destroying debilitating, situation thrust upon me.

Remember the Band Aid Song 'Do They Know It's Christmas'?

You will hear a line that says:

'thank God it's them instead of you'.

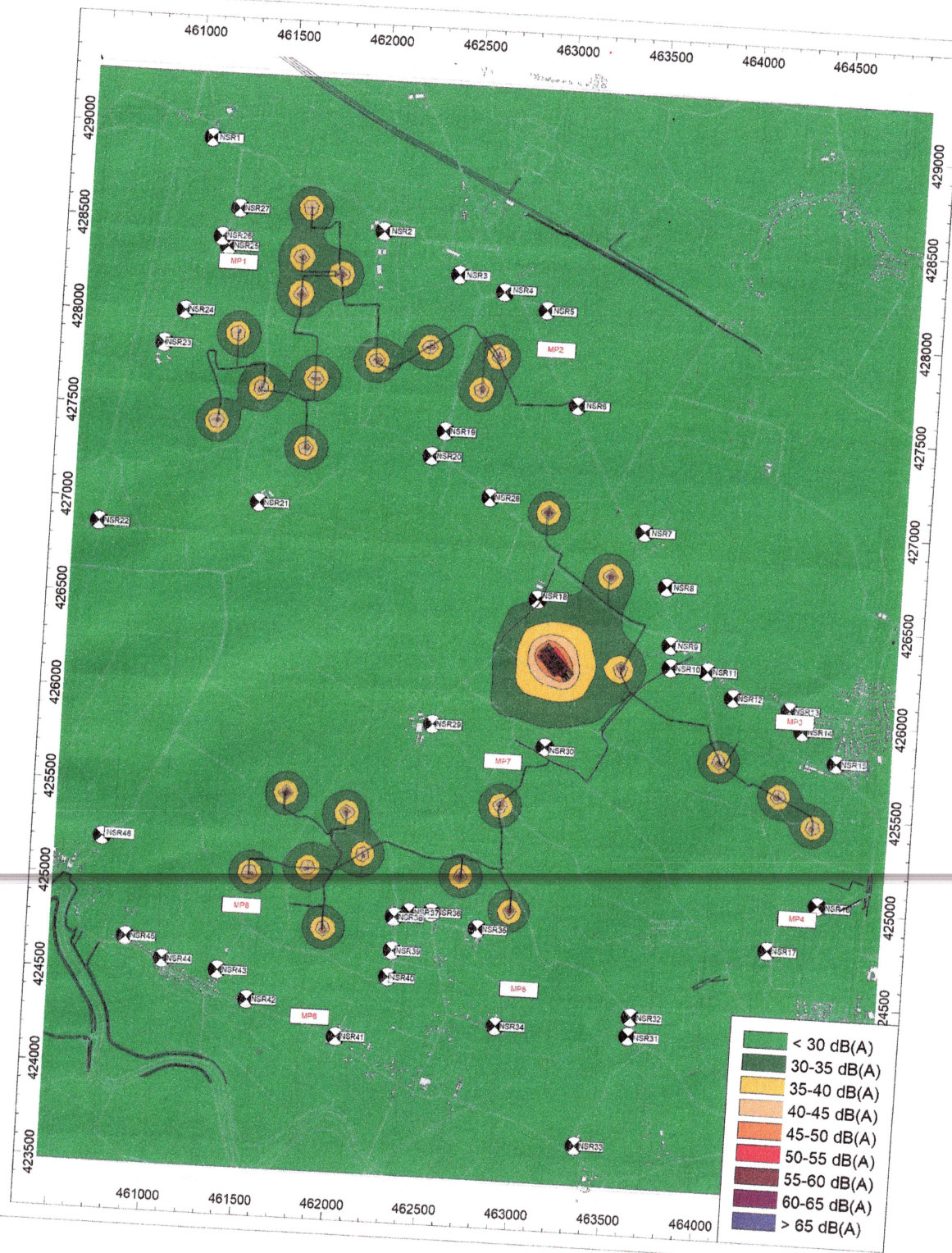
But the saving grace is.


The Planning Inspectorate/Government can prevent this potential Life Wrecking Catastrophe, from ever being passed.

Kind Regards

David Wilkinson

PS: It was not my intension to offend anyone, in any way. If I have, I apologise in advance.



WHAT THE

 ARE
 THESE ?



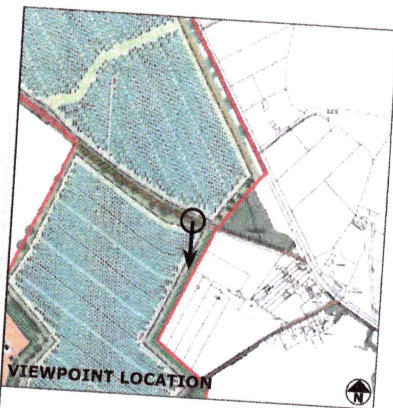
Project Name
 Helios Renewable Energy Project

Figure Title
 Noise Contour Map Night-time

Scale
 1:1,000

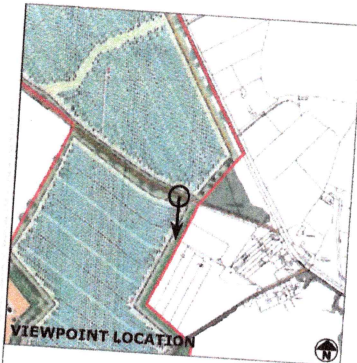
Author
 JM

Checked by
 NM

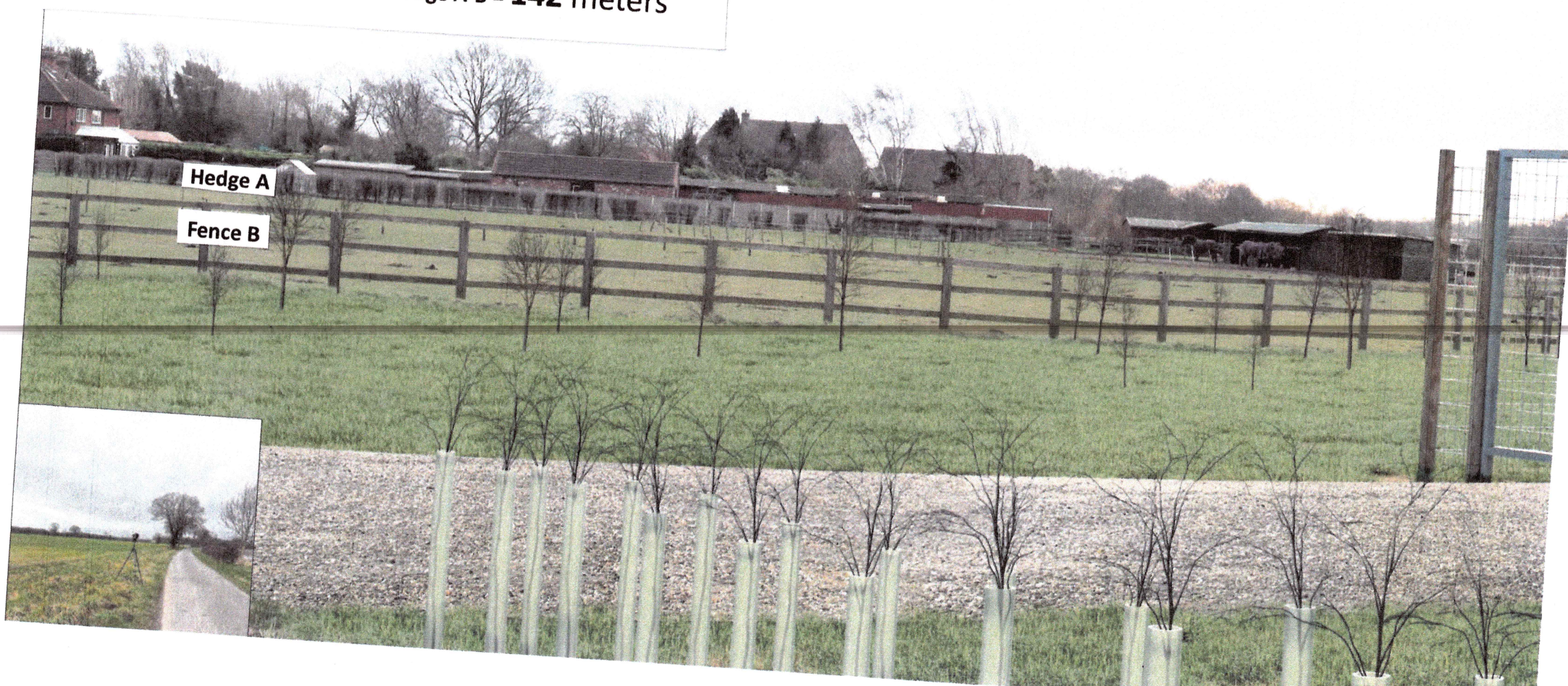


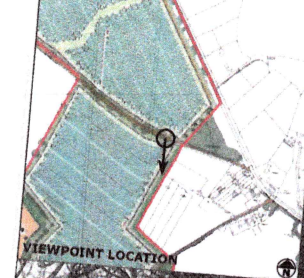
HOUSES 1 & 2 Missing. These are closer to the **Hedge A**
The 3-meter Solar Panels & their Control Gear is the foreground
Side of **Fence B** Distance from Hedge A-B = **142** meters





HOUSES 1 & 2 Missing. These are closer to the **Hedge A**
The 3-meter Solar Panels & their Control Gear is the foreground
Side of **Fence B**. Distance from Hedge A-B = **142 meters**





Spoilt, a beautiful area, to so many people,
in many different ways, that gave quality to life.
Please don't forget the accompanying manufactured noise,
that will emanate 24-07-365 days per year.



TRIPOD LOCATION
PHOTOMONTAGE - YEAR 15

NOTE-
The panels and fencing shown in the above visualisation is based on an indicative layout. The security fencing shown in the visualisation represents the outer extents of the parameter area. This shows the maximum possible extent of

modules into alternating current ('AC') which allows the electricity generated to be exported to the National Grid;

- Transformers are required to step up the voltage of the electricity generated by the PV modules before it reaches the Substation; and
- Switchgear is the combination of electrical disconnect switches, fuses or circuit breakers used to control, protect, and isolate electrical equipment. Switchgears are used both to de-energise equipment to allow work to be done and to clear faults downstream.

- 3.4.17. **The field stations comprise up to 100 stations,** with each unit measuring up to 12.2m in length x 2.4m in width x 3.5 in height, including concrete supports from a minimum of 300mm to a maximum of 600mm in height, above a 300mm permeable deep gravel sub-base within a defined BESS area (refer to **Figure 3.5 Field Stations [EN010140/APP/6.2.3.5]**). The container or cabinet will be externally finished to be in keeping with the prevailing surrounding environment, with solar farms often utilising a green painted finish.

String Inverters

- 3.4.18. String inverters would be mounted to the mounting structures underneath the solar PV infrastructure, and a string inverter will be required for every solar PV string.
- 3.4.19. Where string inverters are used, string transformers are required and would be distributed throughout the Solar Farm Zone within containers. Switchgears would be housed in these same containers or integrated with other components within the Solar Farm Zone.

Substation and BESS Compound

- 3.4.20. The on-Site 132 kV Substation and the BESS will be housed together in a compound.
- 3.4.21. The Substation will comprise an earthing transformer, surge arresters, earth switch, circuit breaker, 33kV intake switch room and generator transformers. The component of the greatest height within the Substation is the generator transformer, standing up to 6.5m (as shown in **Figure 3.6 132 kV Substation [EN010140/APP/6.2.3.2]**).

- 3.4.22. The BESS will include the following:**

- **Battery containers** of up to 12.2m in length x 2.4m in width x 3.5m in height, including concrete supports 600mm in height (refer to **Figure 3.7 BESS Battery Container Elevations [EN010140/APP/6.2.3.7]**); **HOW MANY?**
 - Control room (including a weather station, Wi-Fi antenna and satellite aerial) of up to 6m in length x 3m in width x 5.7m in height (**Figure 3.8 refer to BESS Control Room Elevations [EN010140/APP/6.2.3.8]**);
 - Inverter-transformers of up to 6.1m in length x 2.4m in width x 3.5m in height, including supports 600mm in height (refer to **Figure 3.9 BESS Inverter/Transformer [EN010140/APP/6.2.3.9]**); and
 - Switch room of up to 11.7m in length x 4m in length x 3.9m in height (refer to **Figure 3.10 BESS Switchroom [EN010140/APP/6.2.3.10]**).
- 3.4.23. Due to the potential flood risk (identified in **Chapter 9 Water Environment [EN010140/APP/6.1.9]**) of the ES, the compound will be surrounded by an earth bund. The proposed earth bund will sit at least 600mm above the combined fluvial and tidal design flood level to protect the equipment from inundation.
- 3.4.24. Four water tanks sit at each entrance to the BESS compound, two of which are for the purpose of firefighting, (shown on Figure 4.3 BESS and Substation Preliminary Drainage Strategy Drawing [EN010140/APP/6.2.4.3] which will be secured through DCO requirement), up to an elevation of 3.65m above ground level and diameter of up to 3.45m (**Figure 4.4 Water Tank Elevations [EN010140/APP/6.2.4.4]**). The attenuation basins located within the Substation and BESS Compound will have sufficient capacity to hold 228,000 litres of fire water (1,900 litres per minute for two hours) and accommodate a 1-in-100 year storm event plus 30% allowance for climate change. The presence of a flood bund around the entire Substation and BESS Compound would contain any runoff within the bunded area in event of a fire/ storm event.
- 3.4.25. In order to ensure potentially contaminated water does not leach into the underlying aquifer, the BESS compound will be lined with an impermeable liner. Three attenuation basins (**Figure 4.3 BESS Drainage Strategy [EN010140/APP/6.2.4.2]**), will collect the runoff water from the impermeable liner, to ensure that flood risk is not increased elsewhere, before the clean water is discharged to existing drains via

Selby Constituency MP Keir Mather has been appointed as Assistant Government Whip.

Mr Mather had previously joined the Opposition Whips' Office in March of this year, and will now join the government's frontbench in Parliament.

Speaking about his new appointment, Mr Mather said: "It's an enormous honour to have been asked by the Prime Minister to serve in his government."

"As a government whip, I'll have specific oversight of bills passed by the Department for Environment, Food and Rural Affairs - legislation that will impact all of us in rural communities like the one we call home."

Whips are MPs or members of the House of Lords appointed by each political party to help organise its contribution to parliamentary business.

Along with making sure that the members vote according to their party's line, whips also manage the paring system - a system whereby members of opposing parties both agree not to vote when other business prevents them from being present at Westminster - and work together with the Leader of the House in the Commons to arrange the business of Parliament.

Mr Mather further explained: "Since my election last July, I've worked closely with Labour's Defra team, hosting Secretary of State Steve Reed at Selby

Cattle Market, and Flooding Minister Emma Hardy MP in Kelfield.

"Championing the hard graft of our farmers to put food on our plate day in day out.

"Protecting homes, crop-yielding fields, and crucial infrastructure from flooding, as well as cleaning up our lakes, rivers and seas from the scourge and sewage.

"These issues are my priorities - and I know they are my residents' across our area too.

"I can't wait to get stuck into this role, delivering for our area in Westminster, and remaining a visible and accessible local MP."

Keir Mather MP has been appointed as an Assistant Government Whip. (18-07-261 SU)

Rugby fundraiser to tackle mental health

page 3

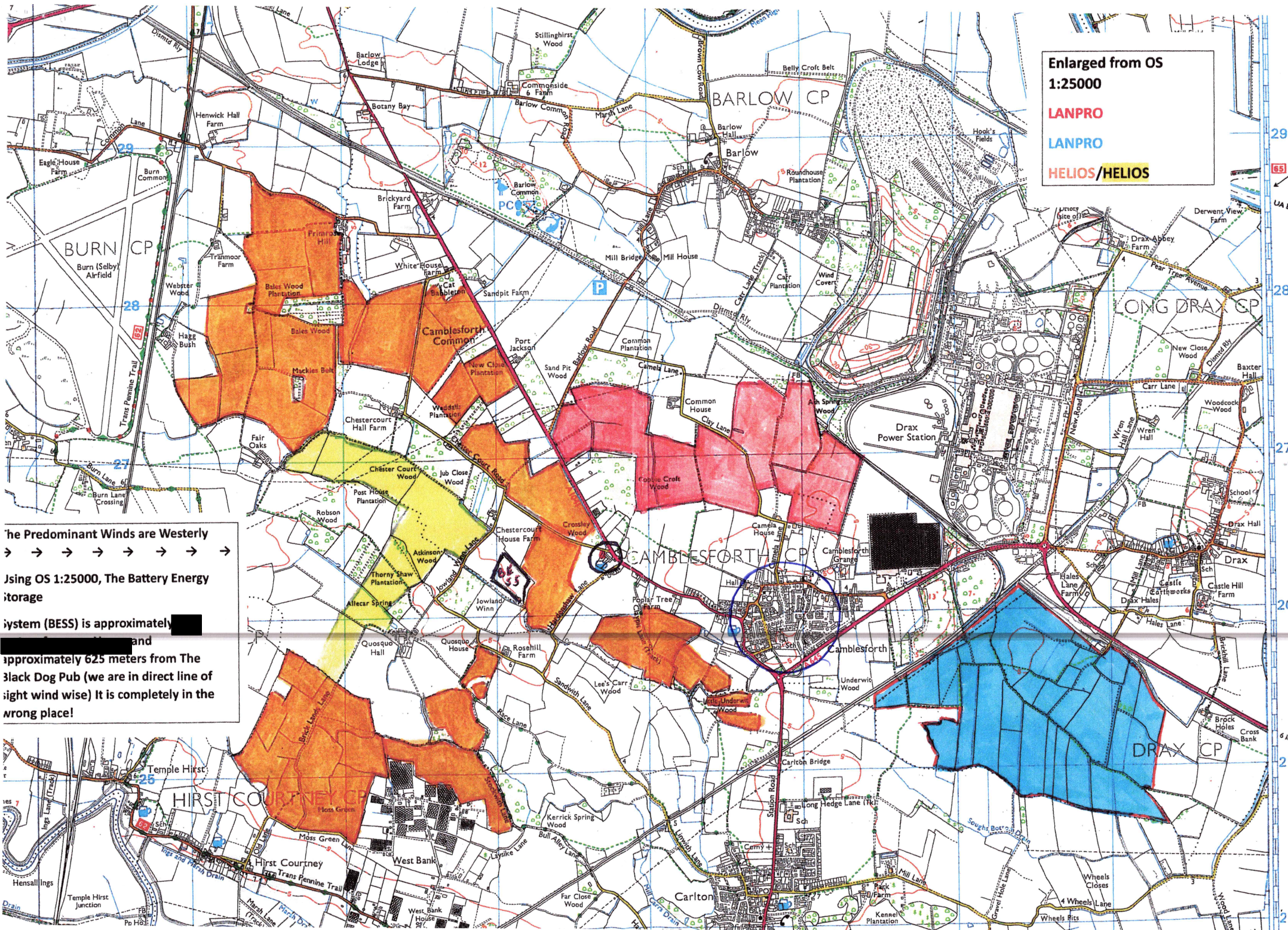
Towton teen takes Euro title

page 39

Selby Times

Thursday, July 18th, 2024

Issue 8040



Enlarged from OS
1:25000

LANPRO

LANPRO

HELIOS/HELIOS

The Predominant Winds are Westerly
→ → → → → → → →

Using OS 1:25000, The Battery Energy
storage

system (BESS) is approximately [redacted]
[redacted] and
approximately 625 meters from The
Black Dog Pub (we are in direct line of
sight wind wise) It is completely in the
wrong place!

2 / 2

400%



FIG 7.19

1

Prevailing → →

Westerly → →

Winds → →

3 meters high
Solar Panels &
Control gear

**BESS &
SUBSTATION**

Chestercourt Cottages

142 meters

Black Dog
PH

3 meters high
Solar Panels &
Control gear

Taken from OS 1:25000

From the BESS and SUBSTATION

Chestercourt Cottages is approximately 575 meters

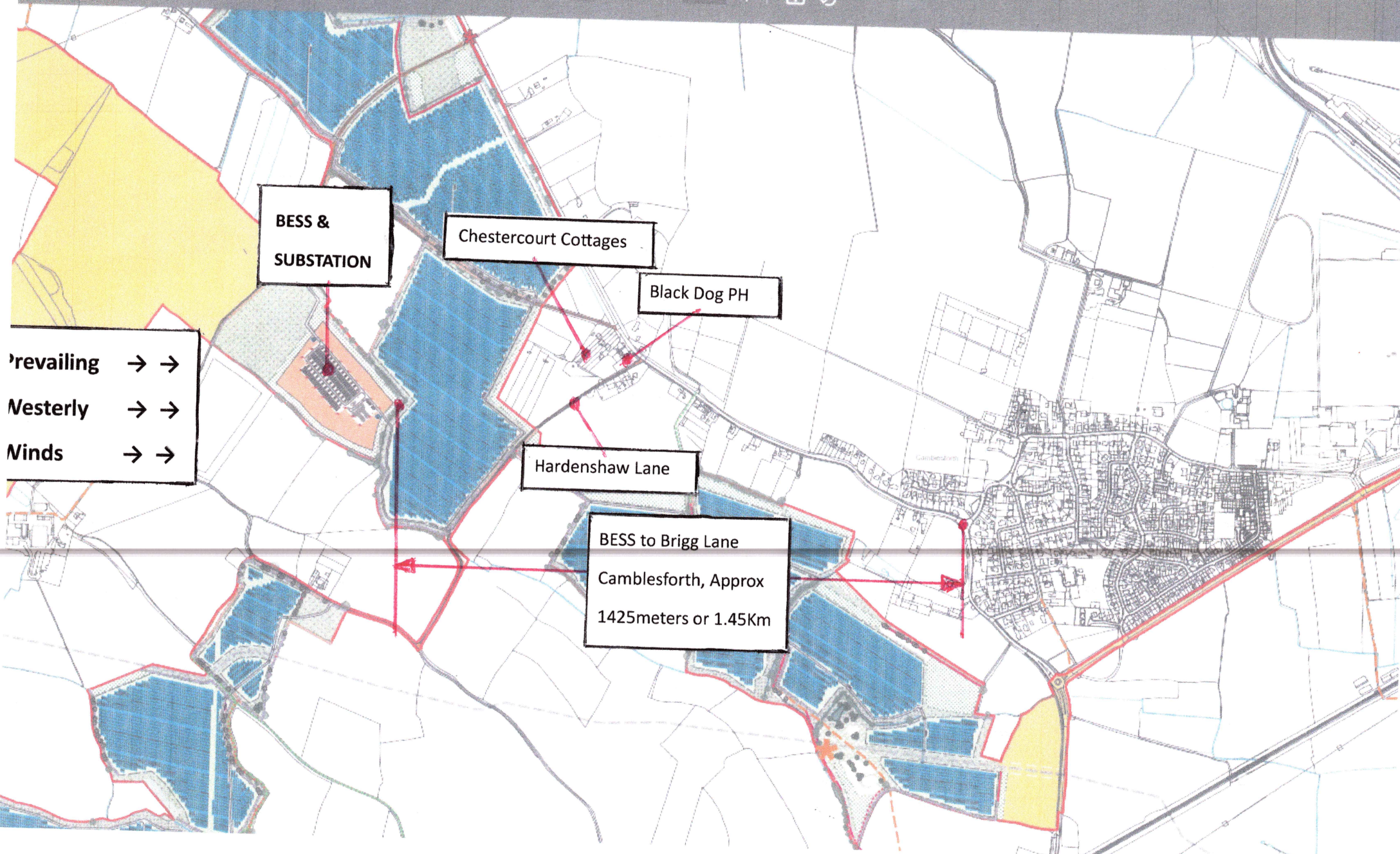
The Black Dog is approximately 625 meters

Please note this area is substantially occupied

Prevailing → →

Westerly → →

Winds → →

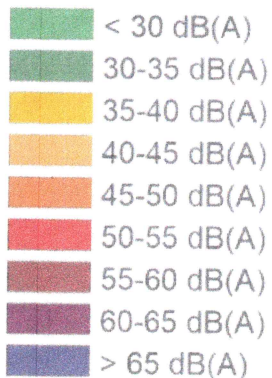


EN010140-000271-6.2 Environmental Statement Figure 11.4 - Noise Contour Map Daytime.

ental Statement Figure 11.4 - Noise Contour Map Daytime.pdf

2 / 2 150%

MAP 7



PREVAILING →
WESTERLY →
WINDS →

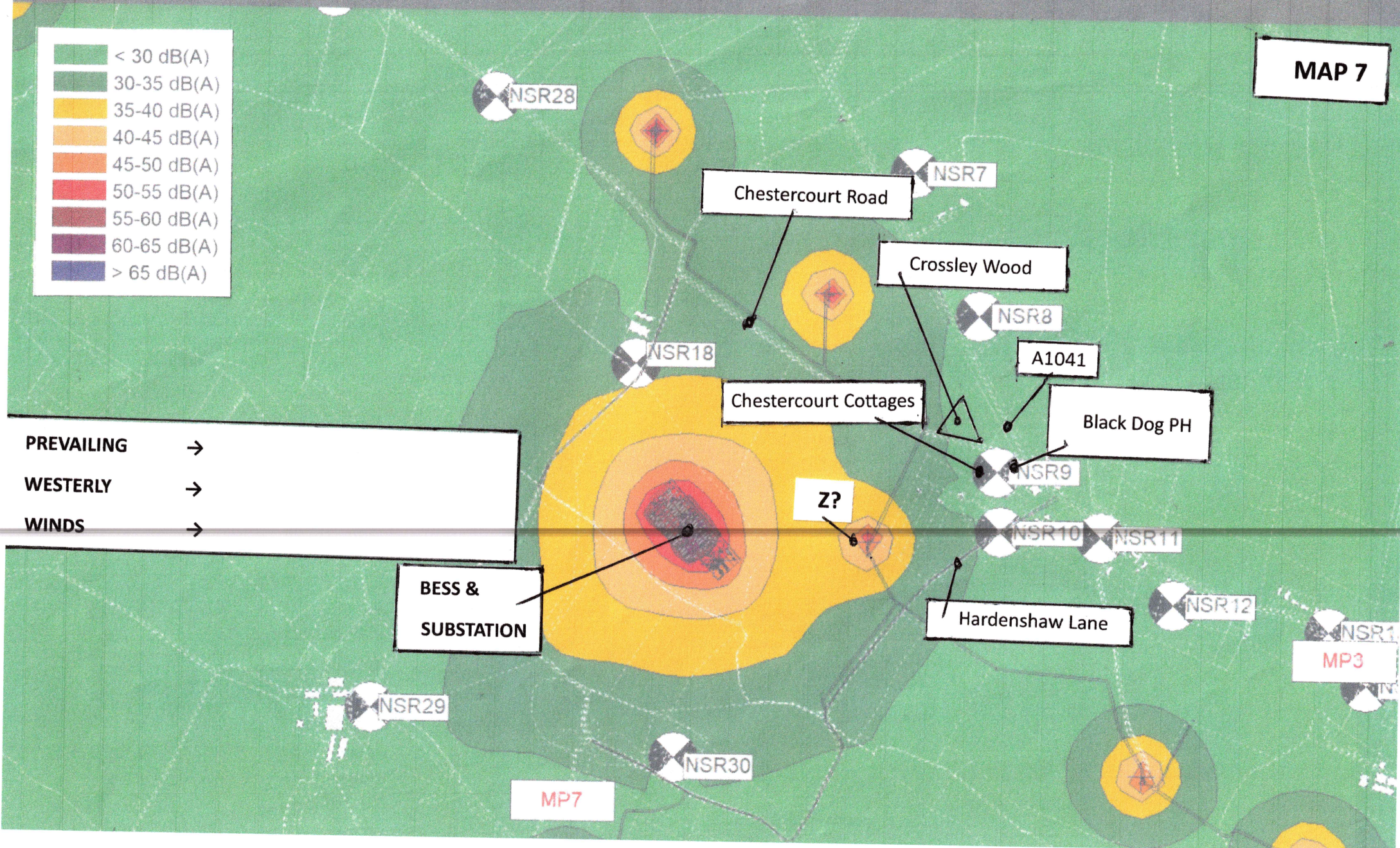
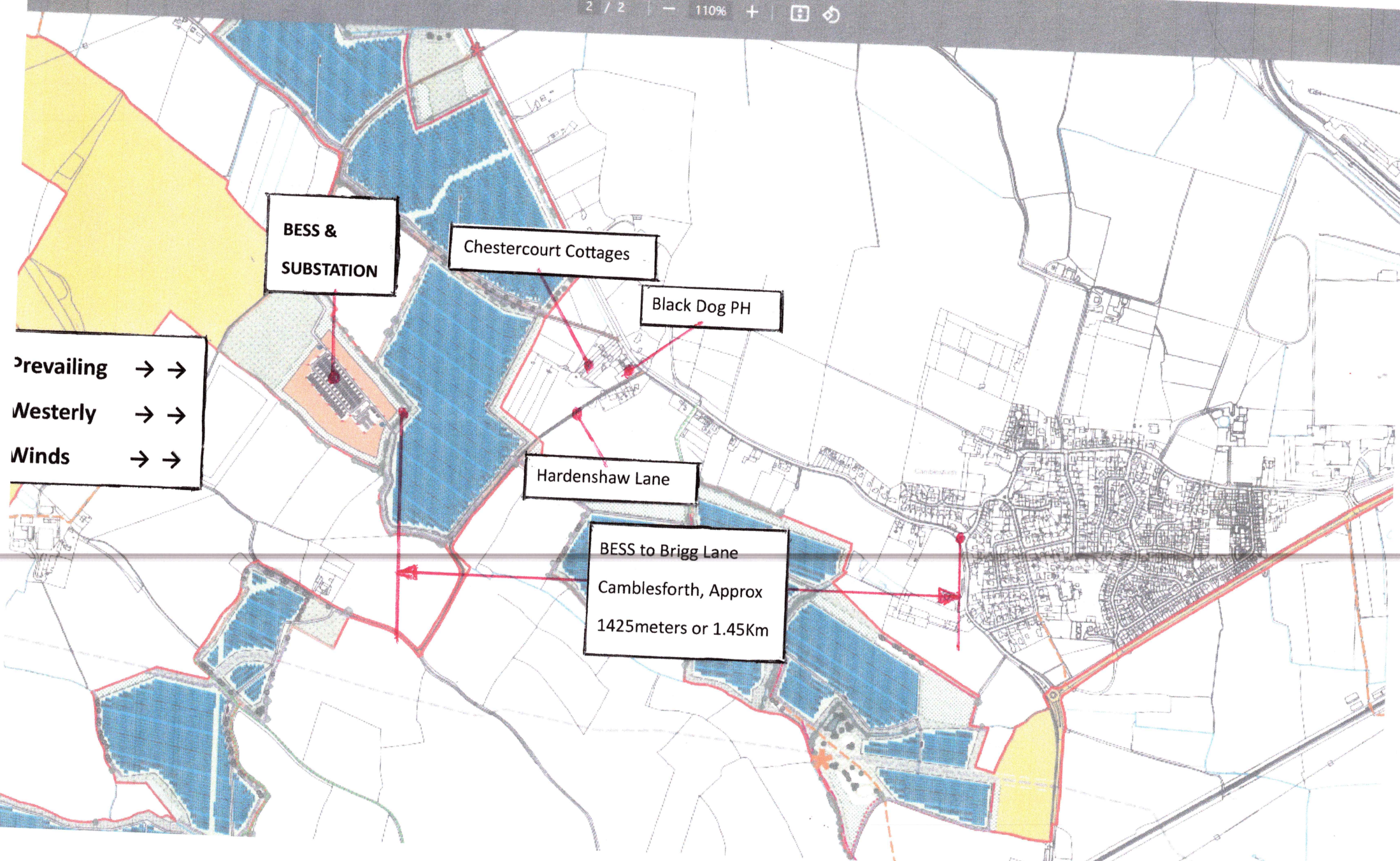
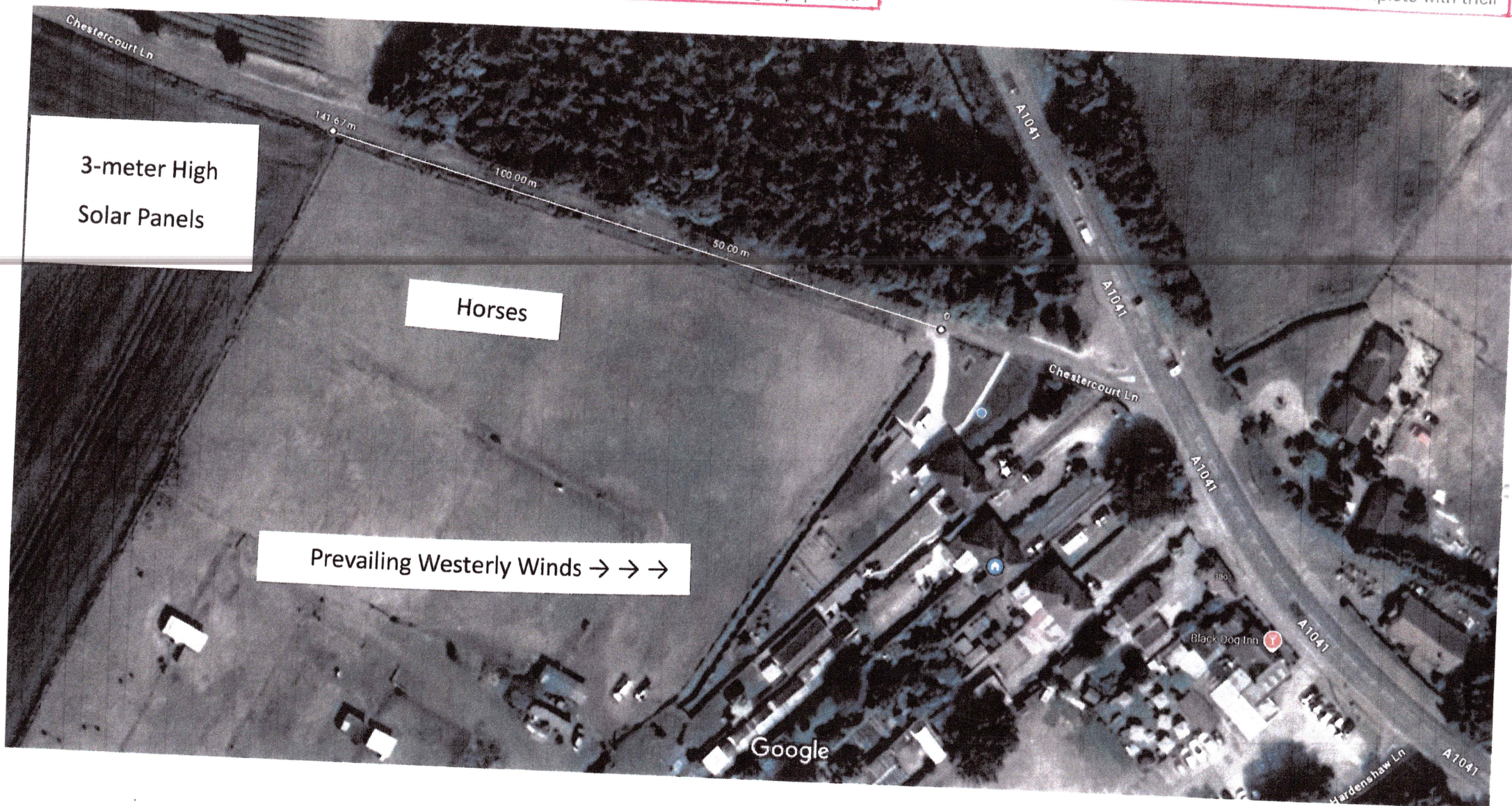


FIG 7.19 **2**



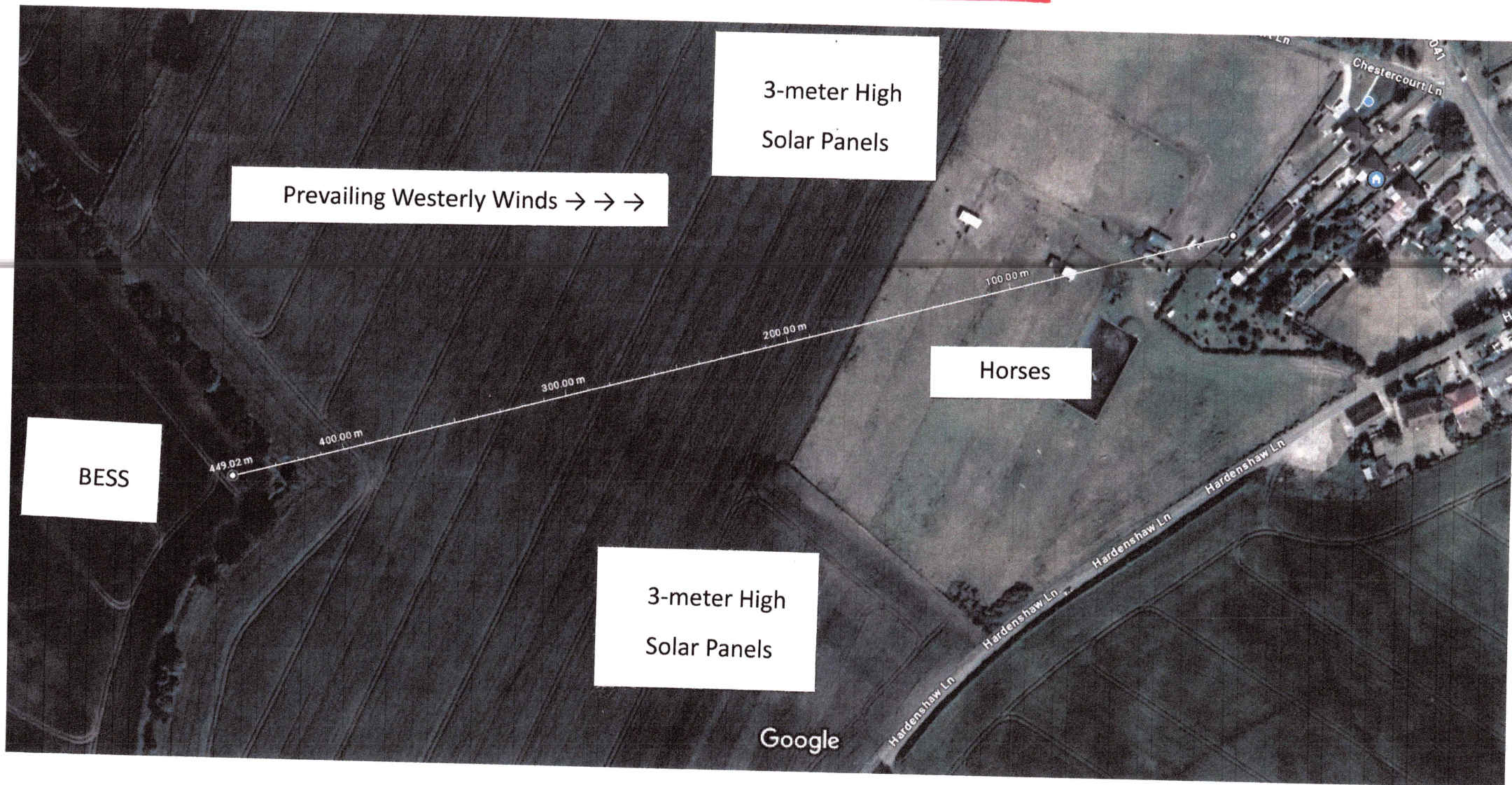
Distance from Chestercourt Cottages, to two of the field site entrances, full of 3 meter high Solar Panels complete with their noise generating - accompanying equipment!



ORIGINALS

Measure distance
Total distance: 141.67 m (464.80 ft)

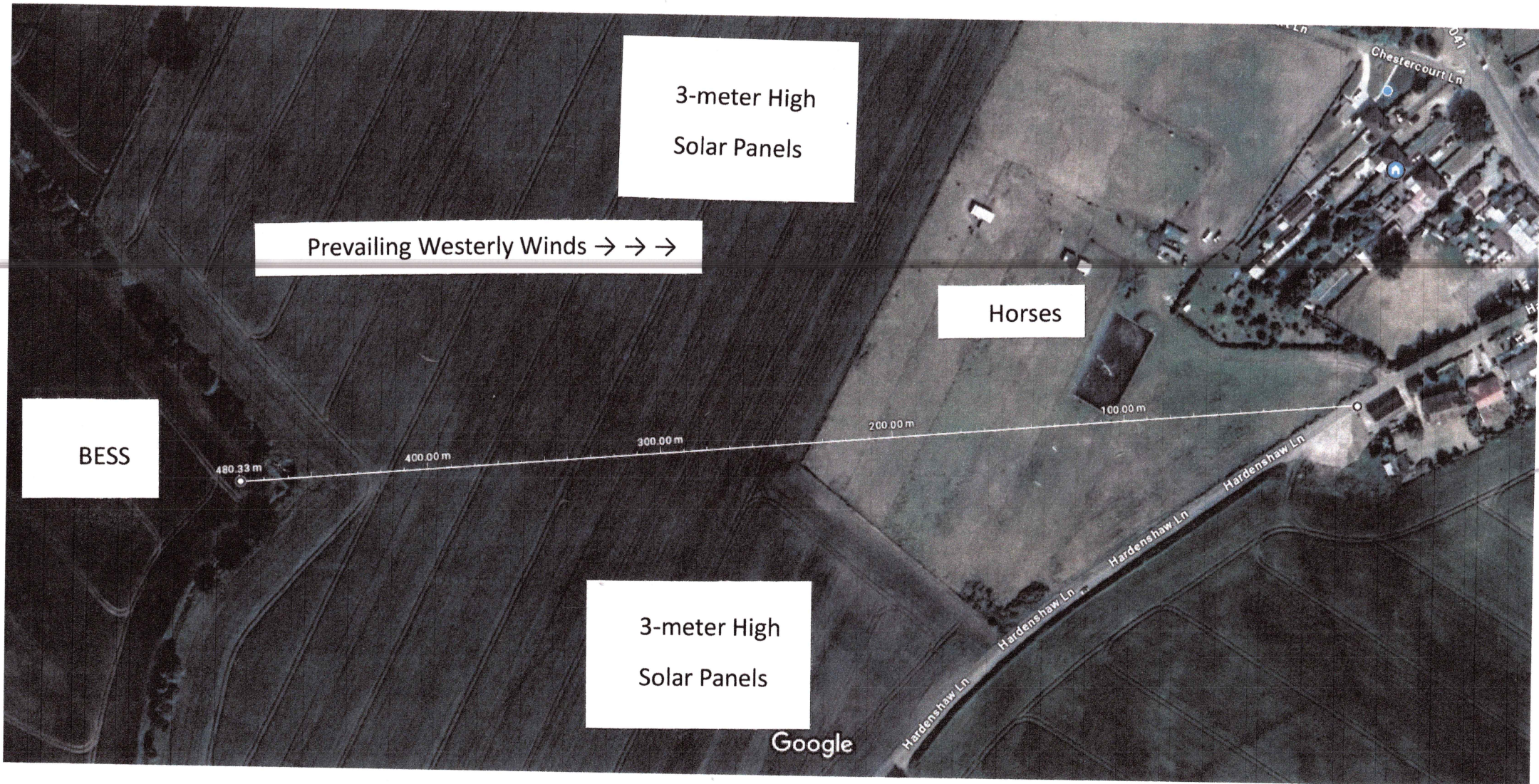
141.67m



Measure distance

Total distance: 449.02 m (1,473.18 ft)

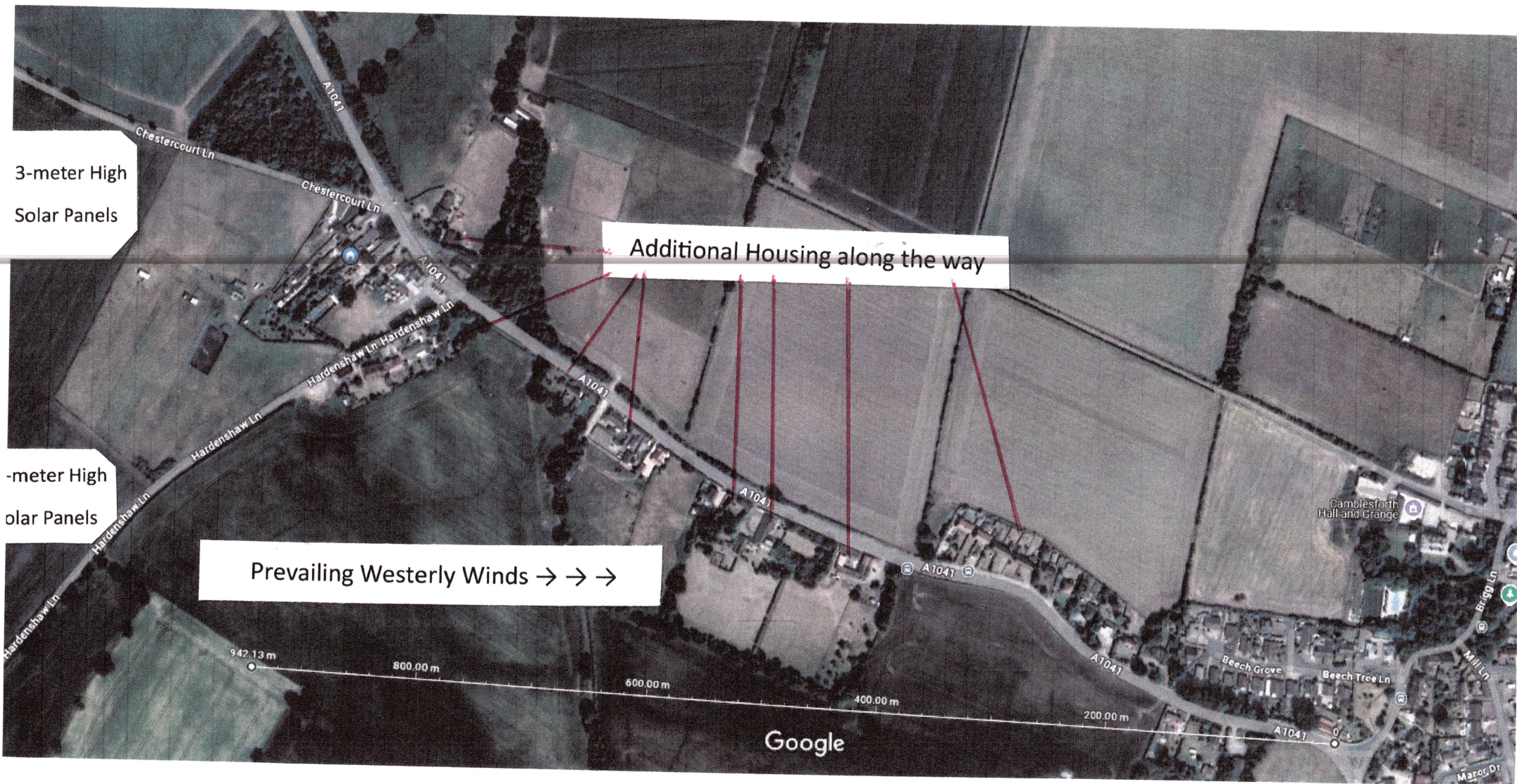
449.02 m



Measure distance

Total distance: 480.33 m (1,575.87 ft)

480.33 m



Measure distance

Total distance: 942.13 m (3,090.96 ft)

942 m

MAP 8

